

PH150F48

SPECIFICATION

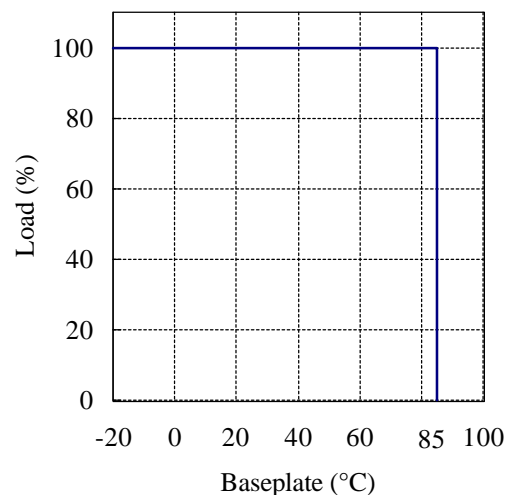
C074-01-01C

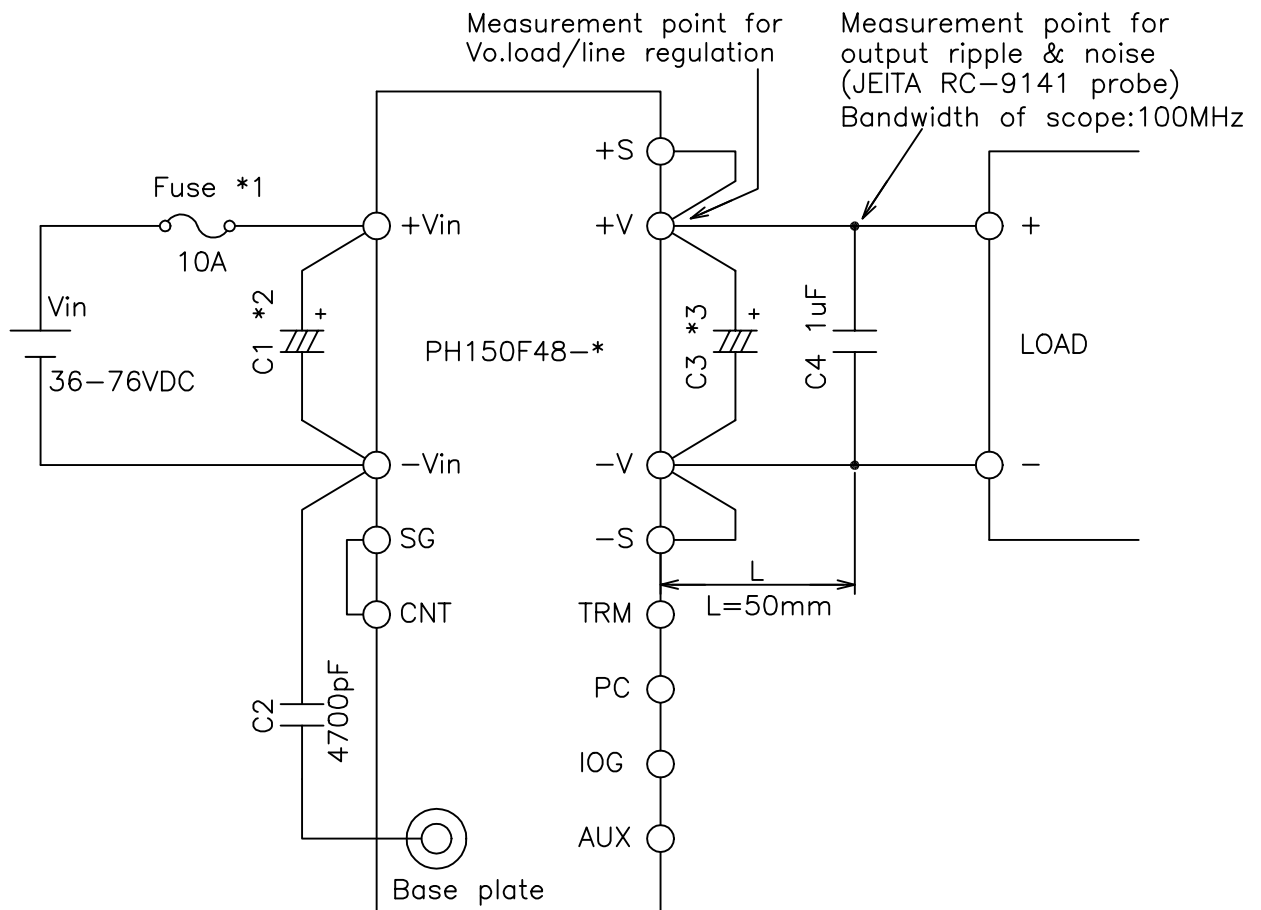
| MODEL | | PH150F | PH150F | PH150F | PH150F | PH150F | PH150F | PH150F | PH150F |
|-------|------------------------------|--------|---|--------|-------------|--------|--------|--------|--------|
| ITEMS | | Feb-48 | 48-3 | 48-5 | 48-12 | 48-15 | 48-24 | 48-28 | |
| 1 | Nominal Output Voltage | V | 2 | 3 | 5 | 12 | 15 | 24 | 28 |
| 2 | Maximum Output Current | A | 30 | 30 | 30 | 12.5 | 10 | 6.3 | 5.4 |
| 3 | Nominal Output Power | W | 60 | 90 | 150 | 150 | 150 | 151.2 | 151.2 |
| 4 | Efficiency (Typ.) (*1) | % | 68 | 73 | 82 | 86 | 87 | 89 | 90 |
| 5 | Input Voltage Range | - | 36 - 76VDC | | | | | | |
| 6 | Input Current (Typ.) (*1) | A | 1.84 | 2.57 | 3.81 | 3.55 | 3.59 | 3.54 | 3.5 |
| 7 | Output Voltage Accuracy (*1) | % | ±1 | | | | | | |
| 8 | Output Voltage Range (*10) | - | ±20% | | +20%, -60% | | | | |
| 9 | Maximum Ripple & Noise (*9) | mV | 100 | 100 | 100 | 150 | 150 | 240 | 280 |
| 10 | Maximum Line Regulation (*2) | mV | 20 | 20 | 20 | 48 | 60 | 96 | 112 |
| 11 | Maximum Load Regulation (*3) | mV | 40 | 40 | 40 | 96 | 120 | 192 | 224 |
| 12 | Over Current Protection (*4) | A | 105% - 140% | | | | | | |
| 13 | Over Voltage Protection (*5) | V | 165% - 240% | | 125% - 145% | | | | |
| 14 | Remote Sensing (*8) | - | Possible | | | | | | |
| 15 | Remote ON/OFF Control (*8) | - | Possible (SHORT:ON OPEN:OFF) | | | | | | |
| 16 | Parallel Operation (*8) | - | Possible | | | | | | |
| 17 | Series Operation (*8) | - | Possible | | | | | | |
| 18 | I.O.G. Signal (*8) | - | Possible (Open Collector Output) | | | | | | |
| 19 | Operating Temperature (*6) | - | - 20 - 85°C (Base plate) Ambient Temperature MIN = -20°C. | | | | | | |
| 20 | Operating Humidity | - | 30 - 95%RH (No Dewdrop) | | | | | | |
| 21 | Storage Temperature | - | -40°C - + 85°C | | | | | | |
| 22 | Storage Humidity | - | 10 - 95%RH (No Dewdrop) | | | | | | |
| 23 | Cooling (*7) | - | Conduction Cooled | | | | | | |
| 24 | Temperature Coefficient (%) | - | 0.02%/°C | | | | | | |
| 25 | Withstand Voltage | - | Input-Baseplate : 2.5kVAC, Input-Output : 3kVAC(20mA) for 1min Output-Baseplate : 500VDC for 1min | | | | | | |
| 26 | Isolation Resistance | - | More than 100Mohm at 25°C and 70%RH Output-Baseplate...500VDC | | | | | | |
| 27 | Vibration | - | At No Operating, 10-55Hz (Sweep for 1min) Amplitude 0.825mm Constant (Maximum 49.0m/s ²) X,Y,Z 1h each | | | | | | |
| 28 | Shock | - | 196.1m/s ² (In package) | | | | | | |
| 29 | Weight (Typ.) | g | 180 | | | | | | |
| 30 | Size (WxHxD) | mm | 83 x 12.7 x 86 (Refer to Outline Drawing) | | | | | | |

=NOTES=

- *1. At 48VDC and Maximum Output Current.
- *2. 36 - 76VDC, Constant Load.
- *3. No load - Full load, Constant input voltage.
- *4. Constant current limiting with automatic recovery.
- *5. Inverter shutdown method, Manual Reset.
- *6. Ratings - Refer to Derating Curve on the Right.
- Load(%) is Percent of Maximum Output Current.
- *7. Heatsink has to be Chosen According to Instruction Manual.
- *8. Refer to Instruction Manual.
- *9 External Components are Needed for Operation.
(Refer to Basic Connection and Instruction Manual)
- *10 At 48VDC Input.(Refer to Instruction Manual.)

DERATING CURVE





==NOTE==

- *1. Use an external fuse of fast blow type, for each unit.
- *2. When the input line impedance is high, insert input capacitor, C1, more than 220µF. (Refer to instruction manual)
- *3. Put an output capacitor. (2,3V: more than 2,200µF, 5V: more than 1,000µF, 12V: more than 470µF, 15v: more than 470µF, 24V: more than 220µF, 28V: more than 220µF)
- *4. Refer to instruction manual for further details.

(unit : mm)

| | |
|----------------------|----------|
| MODEL NAME | PH150F48 |
| DENSEI-LAMBDA | |

C074-01-02C